



**TitanFTP**  
S E R V E R

**Using Events to Remove a Deleted User's Home Directory**

**Quick Start Guide**

**March 2010**

## Notices

Copyright 2010 South River Technologies, Inc. All rights reserved.

Information in this document is subject to change without notice. The software described in this document is furnished under a license agreement, OEM, or reseller agreement. The software may be used or copied only in accordance with the terms of those agreements. No part of this publication may be reproduced, stored in a retrieval system, or transmitted in any form or any means electronic or mechanical, including photocopying and recording for any purpose other than the purchaser's personal use without the written permission of South River Technologies, Inc.

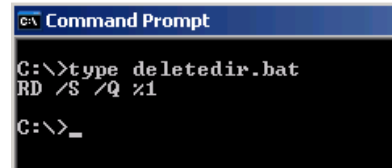
South River Technologies<sup>®</sup>, GroupDrive Collaboration Server<sup>®</sup>, Cornerstone MFT<sup>™</sup>, Titan FTP Server<sup>®</sup>, DMZedge Server<sup>™</sup>, and WebDrive<sup>®</sup> are trademarks of South River Technologies, Inc. in the U.S. and other countries. Microsoft, Windows, Windows NT, Windows XP, and Windows Vista are trademarks of Microsoft Corporation, Inc. The names of other actual companies and products mentioned herein may be the trademarks of their respective owners. Any information in this document about compatible products or services should not be construed in any way to suggest SRT endorsement of that product or service.

South River Technologies, Inc.  
2635 Riva Road  
Suite 100  
Annapolis, Maryland 21401  
USA  
Telephone: 410-266-0667  
Fax: 410-266-1191  
[www.southrivertech.com](http://www.southrivertech.com)

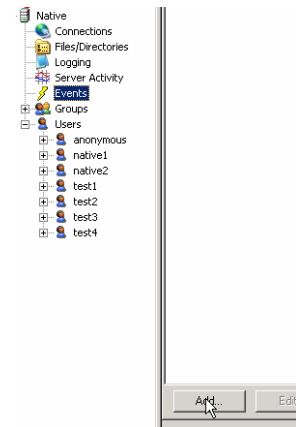
**NOTE:** Event Handlers can be used to delete user home directories when a user is deleted in the Titan Administrator console. The following instructions will help you set up an event handler to delete user's home directories after you have deleted a user. If you need additional assistance, the [Titan FTP User Guide](#) is available online. A listing of Frequently Asked Questions (FAQ) is also available at our [Knowledgebase Support Center](#).

## Creating a Batch File and Configuring your Event Handler

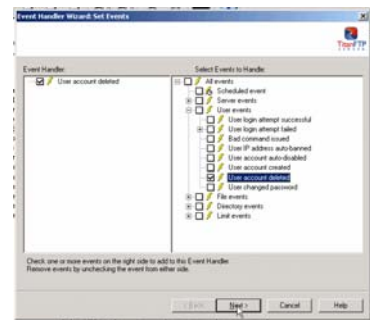
1. Create a batch file on your Titan Server using notepad or other editing utility. Place the following syntax in your batch file: **RD /S /Q %1** (the **%1** variable will be called from a parameter you will set in your event handler in Titan). Your batch file should look like our example. **Note:** Make sure you add a **carriage return** at the end of your batch file and then **save** your batch file.



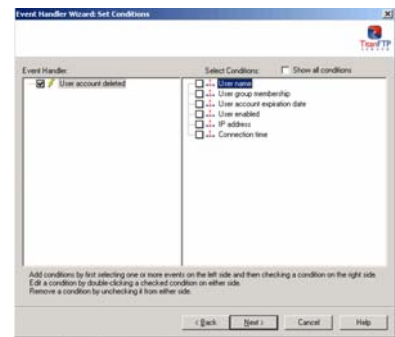
2. Open your Titan Administrator Console, expand your server, click **Events**, and then click **Add**.



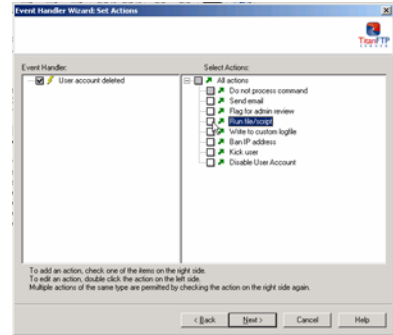
3. Expand **User events**. Select the **User account deleted** check box and click **Next**.



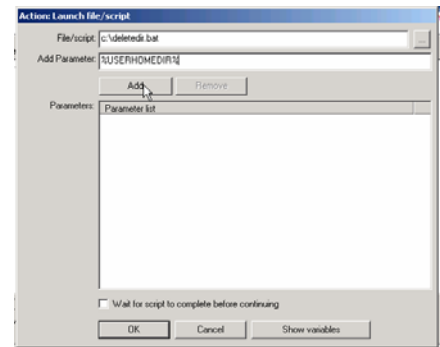
4. Click **Next**. (Do not select any Conditions.)



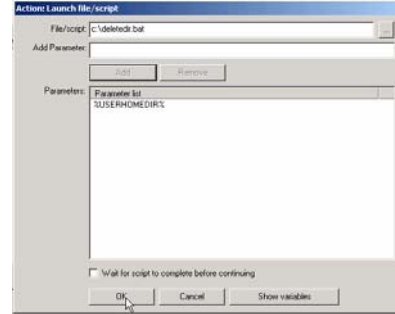
5. Select **Run file/script**.



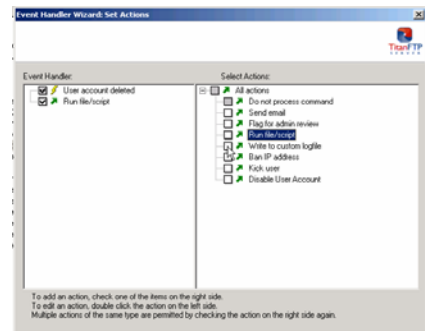
6. Type in the **path** and **file name** for your Script or Batch File, add the parameter **%USERHOMEDIR%** and click **Add**.



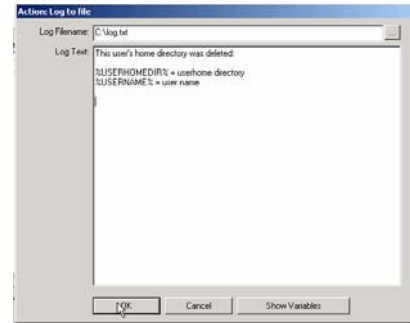
7. Click **OK**.



8. Select **Write to custom Logfile**.

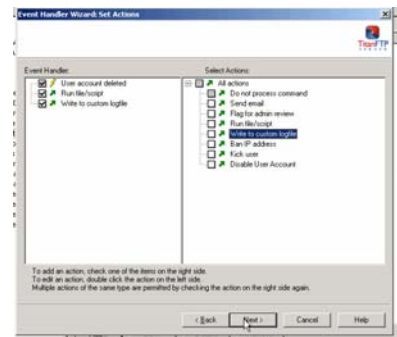


- Type your custom log file **path** and **file name**, type some descriptive text at the top of the log text dialog box, and add your parameters: **%USERHOMEDIR%** and **%USERNAME%** so that you can see which users and which directories have been deleted in your log file. Click **OK**.

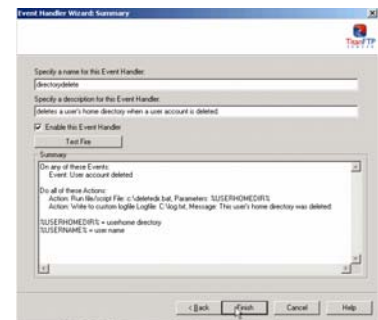


- Your Event handler should look like our example.\* Click **Next**.

\*You can also add a **Send Email** action to your event handler that will notify administrators that a user directory and user account have been deleted. Simply select the **Send Email** action and configure an email alert.

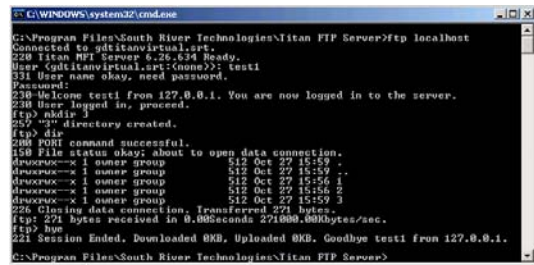


- Type a name and description for your event handler and click **Finish**.



## Testing your Event Handler

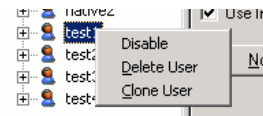
1. Use the Titan Administrator to create a test **User Account**. Log in to your ftp server with your test account and place data or create a subdirectory for the user's data directory.



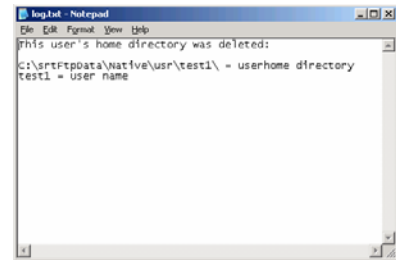
```

C:\WINDOWS\system32\cmd.exe
C:\Program Files\South River Technologies\Titan FTP Server>ftp localhost
Connected to gdtitanvirtual.srt.
220 Titan FTP Server 5.26.556 Ready.
User (gdtitanvirtual.srt-(none)): test1
331 User name okay, need password.
Password:
230 Welcome test1 from 127.0.0.1. You are now logged in to the server.
ftp> mkdir test1
250 'test1' directory created.
ftp> dir
200 PORT command successful.
150 File status okay; about to open data connection.
dprwxr-x 1 owner group      512 Oct 27 15:59 .
dprwxr-x 1 owner group      512 Oct 27 15:59 ..
dprwxr-x 1 owner group      512 Oct 27 15:56 test1
dprwxr-x 1 owner group      512 Oct 27 15:58 test2
dprwxr-x 1 owner group      512 Oct 27 15:59 test3
226 Closing data connection. Transferred 274 bytes.
ftp> 274 bytes received in 0.088seconds 271888.000bytes/sec.
ftp> bye
221 Session Ended. Downloaded 0KB, Uploaded 0KB. Goodbye test1 from 127.0.0.1.
C:\Program Files\South River Technologies\Titan FTP Server>
  
```

2. Delete the **User Account** in your Titan Administrator console.



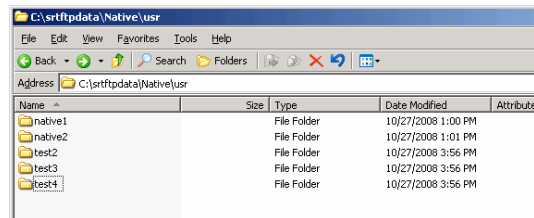
3. Look at your log file to make sure the information on your user and data directory are in your log file. Your log file should show you the user's directory that was deleted and the user name of the deleted user.



```

log.txt - Notepad
File Edit Format View Help
This user's home directory was deleted:
C:\srtftpdata\native\usr\test1\ - userhome directory
test1 = user name
  
```

4. Go to your server directory and see if the user's home directory has been deleted. Note that **test1** subdirectory under the server has been deleted.



### About South River Technologies

South River Technologies (SRT) is an innovator in managed file transfer and document collaboration software. SRT's software seamlessly integrates access to remote files into the desktop applications that users rely on, creating an instantly familiar interface for collaborating, sharing, and accessing files. SRT's enterprise class server products are built using industry standard encryption, highly granular security configuration controls, and technologies to reduce the risk of network intrusions. Over 60,000 customers, including more than 70 colleges and universities, government agencies such as NASA and FAA, and other blue chip companies in more than 110 countries rely on SRT's software to make remote file access and collaboration more efficient for their customers, partners, and distributed workforce. For more information, please visit [www.southrivertech.com](http://www.southrivertech.com).